



**POLITECNICO
MILANO 1863**

Civil Engineering for Risk Mitigation (CERM)

Lecco, 1 December 2017

Structure of the M.Sc. study programme

First year: ***Risk in Civil Engineering disciplines***

Second year: ***Engineering for Risk Management***
(organized along thematic modules)

Enrolled in 2017/2018

Egitto	Iran	Turchia	Cina	Colombia	Nepal	Albania	Trinidad e Tobago	Ghana	Libano	India	Macedonia	Italia	
2	11	4	5	1	1	1	1	1	1	2	6	1	14

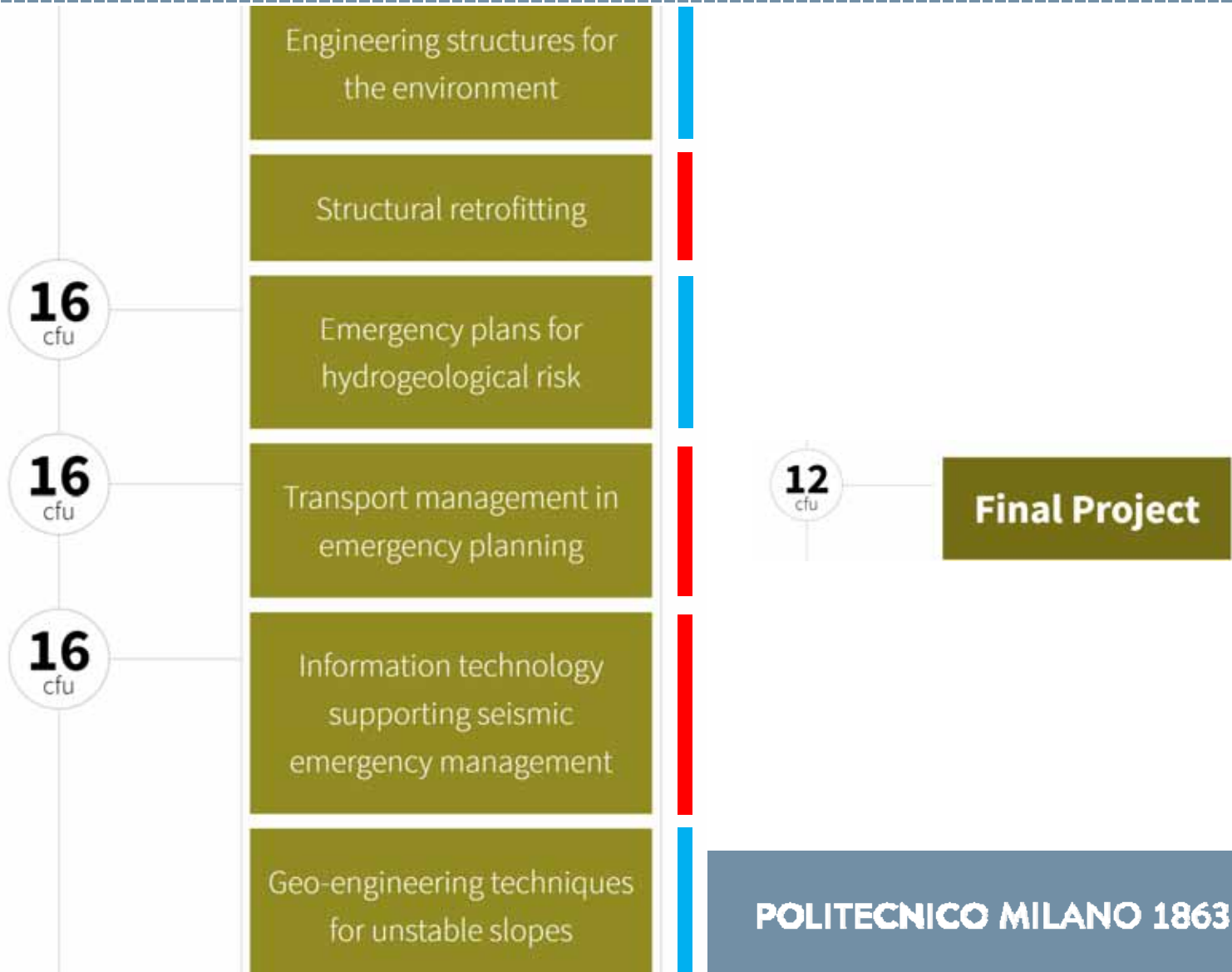
Italiani/totale	0,28
totale LM	50
+2 master italiani	
totale complessivo	52

First year



Second year

2st
year



Specializing Master (I level)

Students create a study plan with 60 cfu, including:

- Tools for risk management (7 cfu)
- Fundamentals of gis (5 cfu)
- Two modules from the second year (32 cfu)
- Final project (16 cfu)

Seminars

Typically organized on Friday afternoon

Talks given by invited national and international experts



Seminar

W. Phillip Yen, Ph.D., P.E.

Director and Chair, International Association of Bridge Earthquake Engineering &
Former Principal Bridge Engineer, Federal Highway Administration, DOT USA

**Developing New Bridge Technologies
to Meet Future Challenges**

Thursday 30 March 2017
2:30 - 4:30PM / room A0.1

POLITECNICO MILANO 1863

Labs

Applied geology and geophysics

Blast and impact

Concrete materials and structures

Mountain hydraulics

Prototype models

Surveying and monitoring

Employability of past students

Magistrali stranieri che restano in Italia a lavorare

60,0%

Arab Engineering Bureau – Qatar

GMI Projects Hamburg GmbH

Posco E&C

Shell Gas & Power

Schindler group

Schlumberger

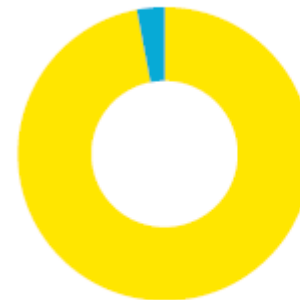
Taru Leading Edge

United Nations Development Programme

PhD studies

Tell us about your experience after graduation; this is essential to pass information to future students

Situazione occupazionale



Tasso di occupazione
Tasso di disoccupazione

97%
3%

Retribuzione mensile media netta

€ 1382

Contact people /1

General

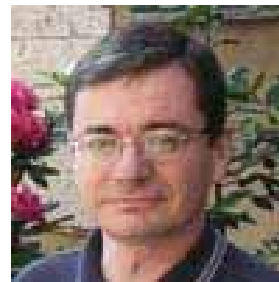
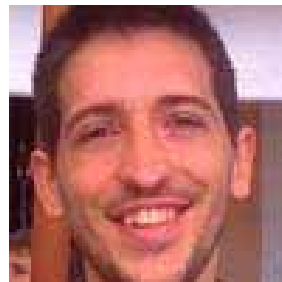
Prof. Marco **Di Prisco** (Coordinator)



Prof. Laura **Longoni** (Academic manager)



Secretariat (Elena **Corbetta**, Alessio **Meoli**, Sandro **Morselli**)



Contact people /2

Reference professors for 2nd year modules

Prof. Cesare **Alippi** (Information technology supporting seismic risk management)

Prof. Roberto **Felicetti** (Structural retrofitting)

Prof. Andrea **Galli** (Engineering structures for the environment)

Prof. Giovanna **Marchionni** (Transport management in emergency planning)

Prof. Scira **Menoni** (Emergency plans for hydrogeological risk)

Prof. **Luigi Zanzi** (Geo-engineering techniques for unstable slopes)

Contact /3

A specific mailbox for any issue a student may wish to raise

ccs-cerm-lecco@polimi.it



PROCESSO		CERlc			ING		
Valutazione Laureandi		2014	2015	2016	2014	2015	2016
	Totale rispondenti	33	28	31	2895	2970	3108
È complessivamente soddisfatto/a del corso di studi?	Decisamente NO	6,1%	3,6%	3,2%	1,2%	1,7%	1,6%
	Piu NO che SI	3,0%	14,3%	6,5%	7,9%	7,8%	9,0%
	Piu SI che NO	54,5%	32,1%	45,2%	56,0%	54,3%	56,1%
	Decisamente SI	36,4%	50,0%	45,2%	34,9%	36,2%	33,2%
Se potesse tornare indietro nel tempo, si iscriverebbe nuovamente all'università?	Sì, allo stesso corso di studio di questo ateneo	48,5%	50,0%	51,6%	67,8%	68,3%	65,1%
	Sì, ma ad un altro corso di studio di questo ateneo	33,3%	32,1%	25,8%	17,3%	18,2%	20,2%
	Sì, allo stesso corso di studio ma in un altro ateneo	6,1%	10,7%	9,7%	4,6%	4,9%	5,4%
	Sì, ma ad un altro corso di studio e in un altro ateneo	12,1%	7,1%	3,2%	8,0%	6,4%	6,4%
	NO, non mi iscriverei più all'università	0,0%	0,0%	9,7%	2,2%	2,2%	2,8%

Contact people /4 Specific areas

Prof. Gabriella **Bolzon** (Erasmus, international experiences)



Ing. Matteo **Colombo** (Internship and training)



Prof. Alessio **Radice** (Teaching quality certification)



Ing. Giovanna **Marchionni** (Web site and social media for students)



Prof.ssa Laura *Longoni*



1. Professor of Engineering Geology
2. Didactic/Academic manager
3. Student-Professor joint committee



The didactic manager is an innovative professional person who oversees the processes and organization of the "academic course" (but also "university life")

ACTIVITIES:

• Students support

- monitoring the process of recruitment
- study plans → "careers guidance" in University

• Professors support

- to verify the didactic programs
- To test schedules...

• Additional didactic activities

- Welcome day;
- External activities
- Others...

Additional didactic activities: VAJONT DAM

16



17-18 October 2008:

We visited the Vajont Dam: one of the most important hydrogeological catastrophes in Italy.



Additional didactic activities: L'Aquila ABRUZZO

17



28-30 October 2009:

The excursion was done in collaboration with the Firefighters.



Student-Professor joint committee

Commissione Paritetica

The School's Joint Board sets out **to monitor** the training offering and **the quality of the teaching and student services**, as well as to identify indicators for evaluating results. Moreover, it confers on the establishment and closure of Programmes, and **draws up proposals for their improvement**.

<http://www.ingcat.polimi.it/en/school/student-professor-joint-committee/>

recruitment

Didactic performance

student performance

Student-Professor joint committee

Commissione Paritetica

This committee is made up of 10 members, of which 5 faculty and 5 student representatives. The Chairmanship and Vice-Chairmanship are held respectively by a professor and a student.

Members of the Joint Committee

Prof. Laura Scesi - laura.scesi@polimi.it

Prof. Laura Longoni - laura.longoni@polimi.it

Prof. Giovanni Ravazzani - giovanni.ravazzani@polimi.it

Prof. Giovanna Venuti - giovanna.venuti@polimi.it

Prof. Maria Dina Vivarelli - maria.vivarelli@polimi.it

Student representatives

Sig. Francesco Padovani - francesco2.padovani@mail.polimi.it

Sig. Dario Spreafico - dario.spreafico@mail.polimi.it

Sig. Riccardo Fasani - riccardo.fasani@mail.polimi.it

Sig.ra Gaia Pani - gaia.pani@mail.polimi.it

Sig. Mattia Maria Bernacchi - mattiamaria.bernacchi@mail.polir



WE NEED YOU !

To organize something interesting we must cooperate and work together.

If you have any proposals for new educational activities or extra teaching activities (about CERM), do not hesitate to contact me!

Keep in touch...

laura.longoni@polimi.it

Teaching quality certification

Documents

- CERM presentation (*SUA, Scheda Unica Annuale*)
- CERM self-evaluation (*Rapporto di Riesame*)



Students' evaluation (questionnaires)

Students' representatives

Web information

www.master-cerm.polimi.it

www.polo-lecco.polimi.it

www.polimi.it